



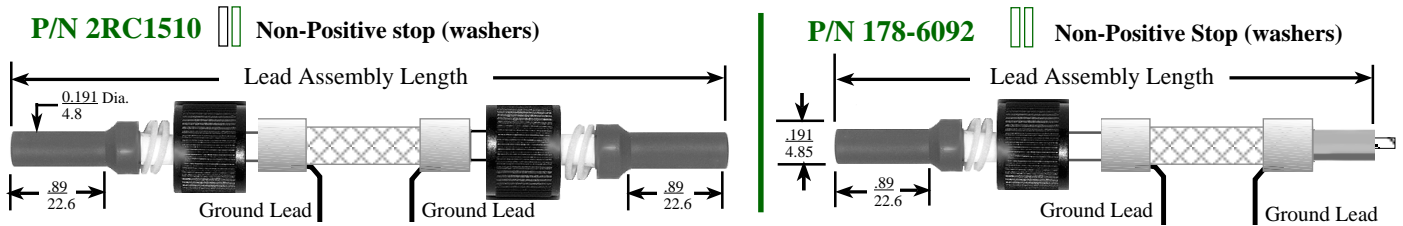
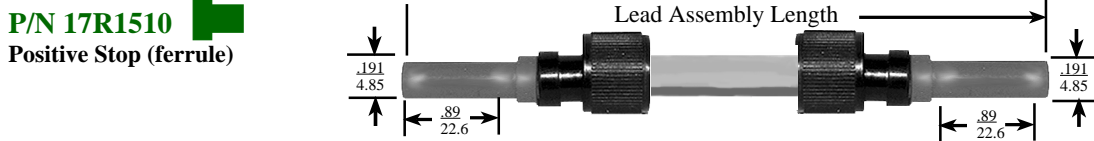
C 737 Series*

15 KVDC High Voltage Lead Assemblies and Receptacles

Altitude Rated
For Limited Military/Aerospace Applications
Operating Temperature:
-55°C to +95°C

C 737 Series

15 KVDC Shielded & Non-Shielded Lead Assemblies



C 737 Series Functional Characteristics

Operating voltage: 15 KVDC any altitude to 70,000 ft. • Operating Temperature: -55°C to +95°C
 Mating connectors: All C 737 series receptacles • All series 737 receptacles • All LGH 1/2LI series receptacles
 Cable type: White 0.160 Dia. silicone rubber. #AWG 16

Ordering Cable Assemblies

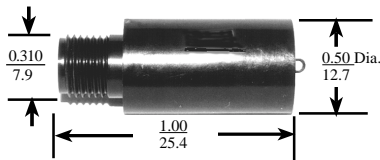
Use -XLX to specify cable assembly length:

X=feet L X=inches Example: 4L6 is 4 feet, 6 inches

Note: Stranded wire shown on single-ended assemblies is for factory testing and is not included in length dimension

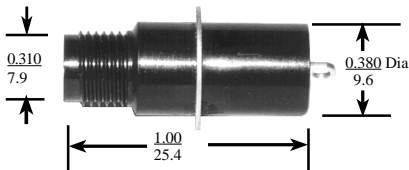
C 737 Series

15 KVDC Receptacles



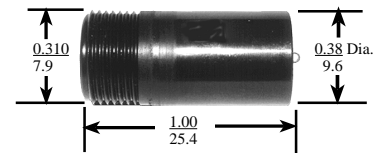
P/N RC1515

Operating voltage: 15 KVDC to 70,000 ft.
 Operating temperature: -55°C to +95°C
 Mating connectors:
 All C 737 lead assemblies
 All Series 737 lead assemblies
 All LGH 1/2LI lead assemblies



P/N 2RC1515

Operating voltage: 15 KVDC to 70,000 ft.
 Operating temperature: -55°C to +95°C
 Mating connectors:
 All C 730 lead assemblies
 All series 737 lead assemblies
 All LGH 1/2LI lead assemblies
 Solder flange: Brass with tin plate



P/N 13RC1515

Operating voltage: 15 KVDC to 70,000 ft.
 Operating temperature: -55°C to +95°C
 Mating connectors:
 All C 730 lead assemblies
 All series 737 lead assemblies
 All LGH 1/2LI lead assemblies

Test Voltage: 18 KVDC
Lead Assemblies and Receptacles
are 100% tested at sea level.

* In 1997, Reynolds Industries, Inc. acquired the RLA 1510 and 1515 Series as depicted above from Rowe Industries, Inc. The RLA Series has been re-named C Series and retains its functional design.