



# Series

# 311

## 15 KVDC

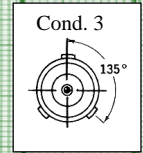
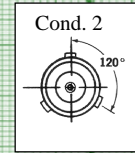
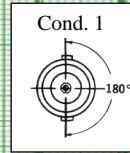
Reduced

Atmospheric Pressure

### Operating Temperature:

-40°C to +85°C

### Polarized



## Plugs



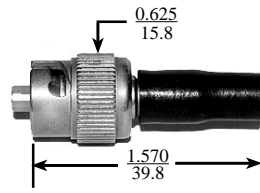
Cond. 1 (shown)  
**P/N 167-7624-1\*\***



Cond. 2  
**P/N 167-7624-2\*\***



Cond. 3  
**P/N 167-7624-3\*\***



Polarized

Plug (female)

Hooded socket contact

Grounding spring finger sleeve

Uses type "C" cable **P/N 167-2669**

Crimp braid termination

\*Standard item

\*\* Special order item

For general specifications, see p. 2

For cable preparation and assembly instructions, see p. 43

Bulk cable: See p. 40 for ordering & specifications

## Receptacles (Male)



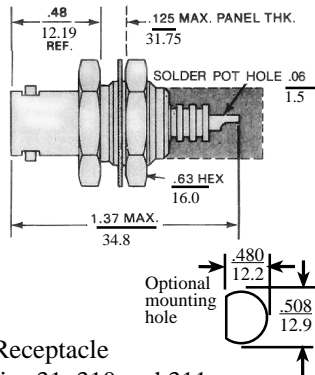
Cond. 1 (shown)  
**P/N 167-7792\***



Cond. 2  
**P/N 167-7793\*\***



Cond. 3  
**P/N 167-7794\*\***



Polarized

Non-sealed Front Mount Receptacle

\*Standard item. Mates series 31, 310 and 311

series plugs and cable assemblies

100% voltage test: 21 KVDC. Sea level

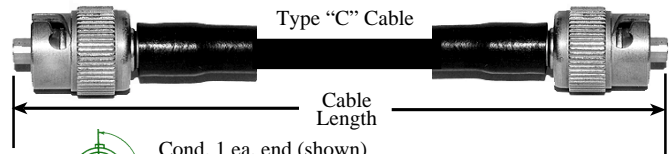
\*\* Special order item

### Cable Assembly

#### Ordering Information

Order by P/N. Use "N" for inches, "F" for feet  
Example: Cable Assembly 178-7034 10 feet 8 inches in length is ordered as **P/N 178-7034-10F-8N**

## Cable Assemblies



Cond. 1 ea. end (shown)  
**P/N 178-7026** Standard cable assembly



Cond. 2 ea. end  
**P/N 178-7027** Non-standard cable assembly. Available on special order only



Cond. 3 ea. end  
**P/N 178-7028** Non-standard cable assembly. Available on special order only

Polarized

Double-Ended Cable Assembly

15 KVDC rated

Uses type "C" cable **P/N 167-2669**

Crimp braid termination

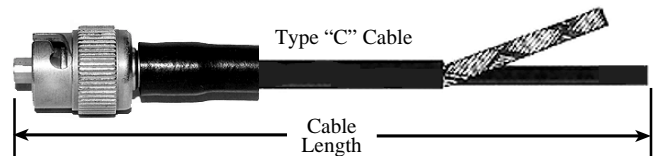
Mating connectors: Mates all series 311 receptacles with corresponding Polarization Condition.

100% voltage test: 21 KVDC @ 70,000 ft. (simulated) and ambient temperature

Ordering: See cable assembly ordering information, below

Bulk cable: See p. 40 for ordering and specification

For general specifications, see p. 2



Cond. 1 ea. end (shown)  
**P/N 178-7032** Standard cable assembly



Cond. 2 ea. end  
**P/N 178-7033** Non-standard cable assembly. Available on special order only



Cond. 3 ea. end  
**P/N 178-7034** Non-standard cable assembly. Available on special order only

Polarized

Single-Ended, Pigtail Cable Assembly

15 KVDC rated

Uses type "C" cable **P/N 167-2669**

Crimp braid termination

Mating connectors: Mates all series 311 receptacles with corresponding Polarization Condition

100% voltage test: 21 KVDC @ 70,000 ft. (simulated) and ambient temperature

Ordering: See cable assembly ordering information, left